
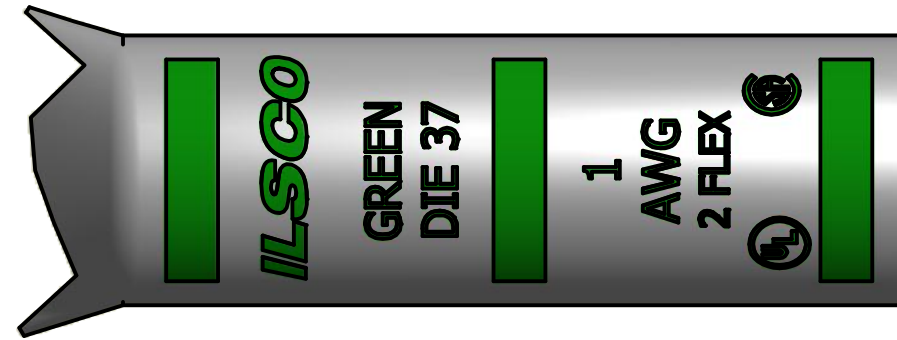
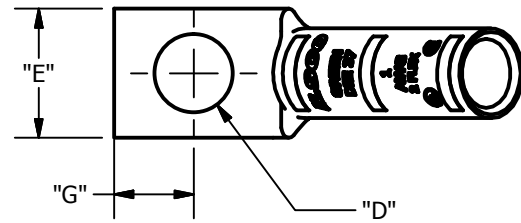
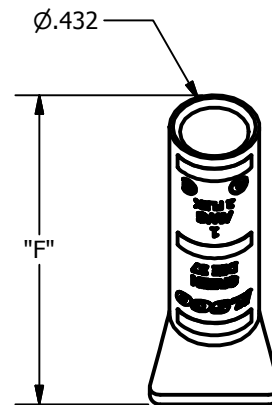
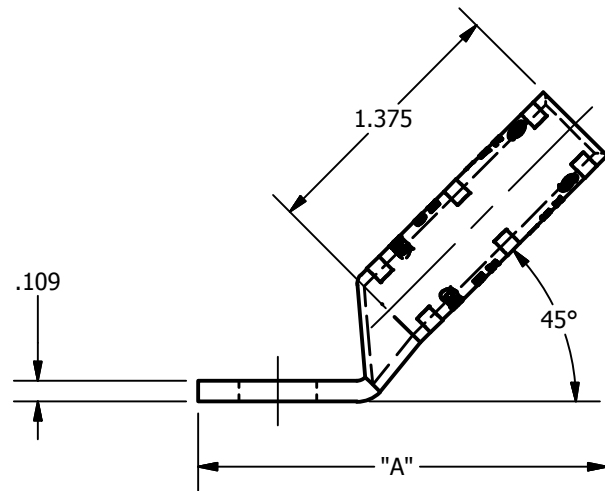


SCREW: NONE	MATERIAL: L136025, CDA-122 CU	REV: E	 800-776-9775 www.ilSCO.com
CAT. NO.: SEE CHART	PLATING: EL-TIN	DRAWN BY: DW SCALE: NTS	
INFORMATION SHEET:	MARKING: SEE CHART	DATE: 6/3/2008 SIZE: B	
			DWG NO: Y0603-S-4
			SHEET: 1 OF 1



DETAIL E
INK MARK TOP & BOTTOM



CATALOG NUMBER	"A"	"D"	"E"	"F"	"G"	TANG MARKING
CLNB-1-10-4	1.901	0.219	0.673	1.624	0.257	UL, ILSCO, CSA, CLNB-1-10-4, 10, 1 AWG, 2 FLEX, DIE 37
CLNB-1-14-4	2.214	0.281	0.673	1.620	0.320	UL, ILSCO, CSA, CLNB-1-14-4, 1/4, 1 AWG, 2 FLEX, DIE 37
CLNB-1-12-4	2.589	0.562	0.750	1.620	0.546	ILSCO, CLNB-1-12-4, 1 AWG, 2 FLEX, DIE 37, UL, CSA
CLNB-1-38-4	2.214	0.406	0.673	1.620	0.414	UL, ILSCO, CSA, CLNB-1-38-4, 3/8, 1 AWG, 2 FLEX, DIE 37
CLNB-1-516-4	2.214	0.343	0.673	1.620	0.351	UL, ILSCO, CSA, CLNB-1-516-4, 1 AWG, 2 FLEX, DIE 37